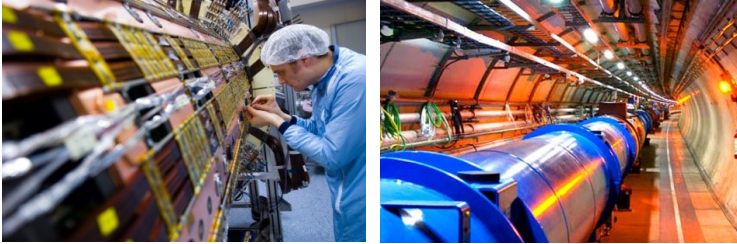


# Implicit Provenance Gathering through Configuration Management



# 1. Introduction and Background

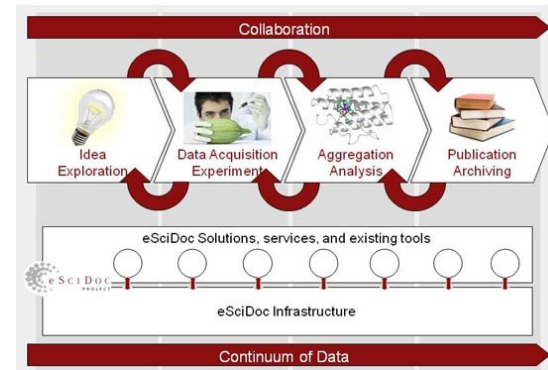
Scientific experiments



System simulations



Scientific workflows



Data transformation

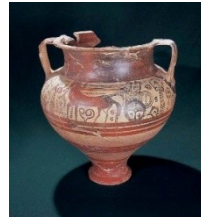


## 1. Introduction and Background

# What is Data Provenance ?

# 1. Introduction and Background

- Provenance in arts

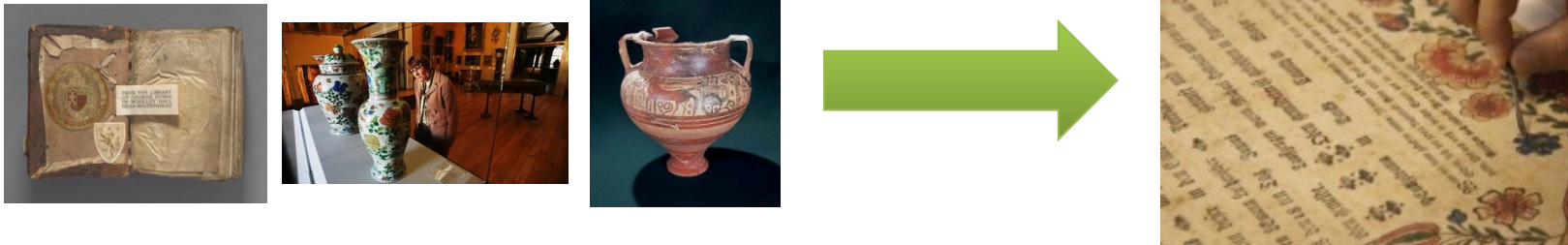


- Data provenance

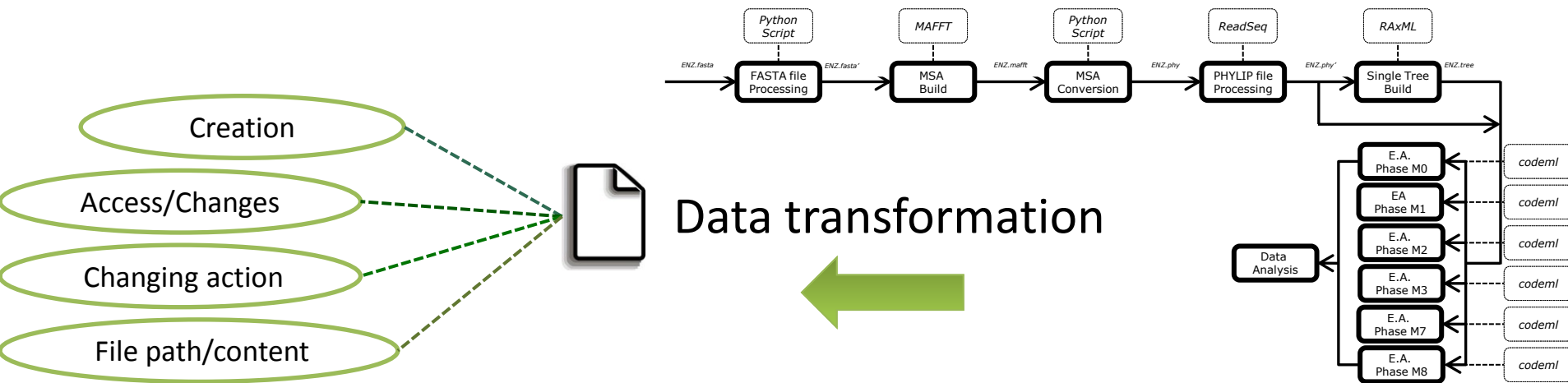
Historical information about data ownership  
and transformations

# 1. Introduction and Background

- Provenance in arts



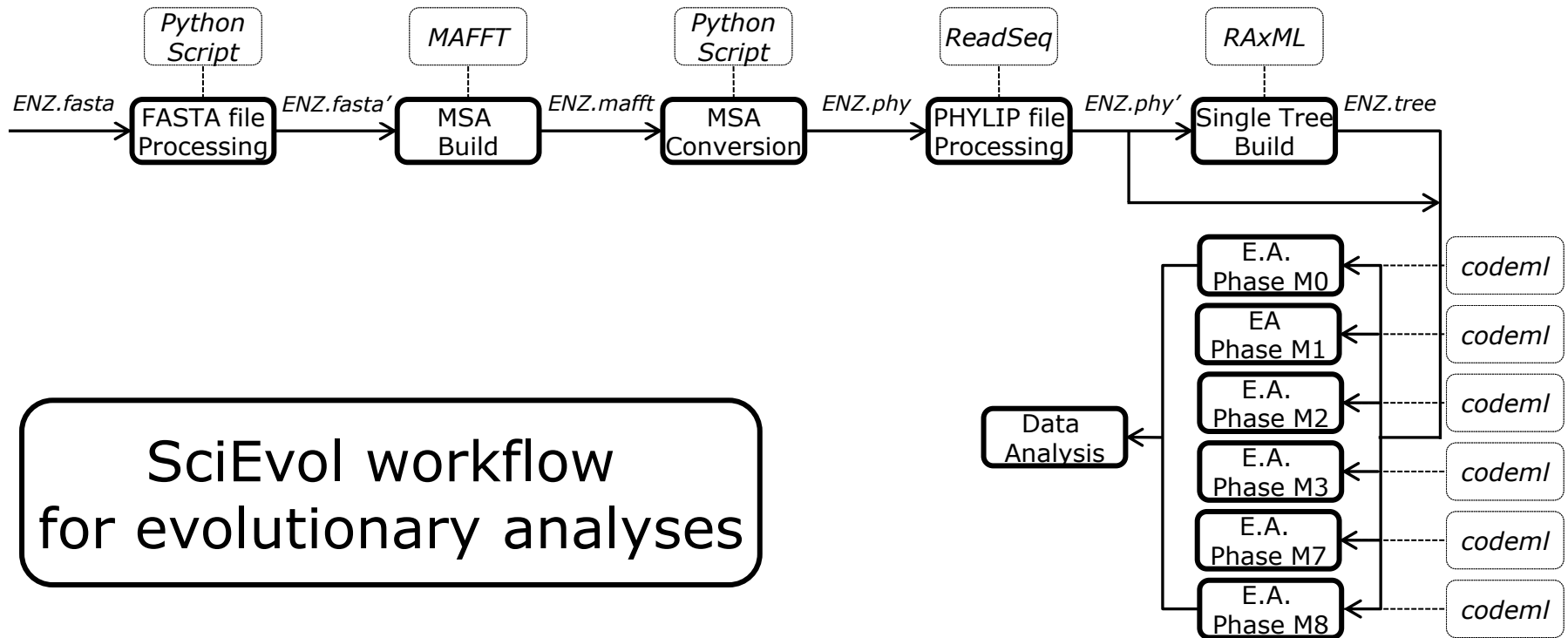
- Provenance in the Experiment context



## 2. Problem Statement

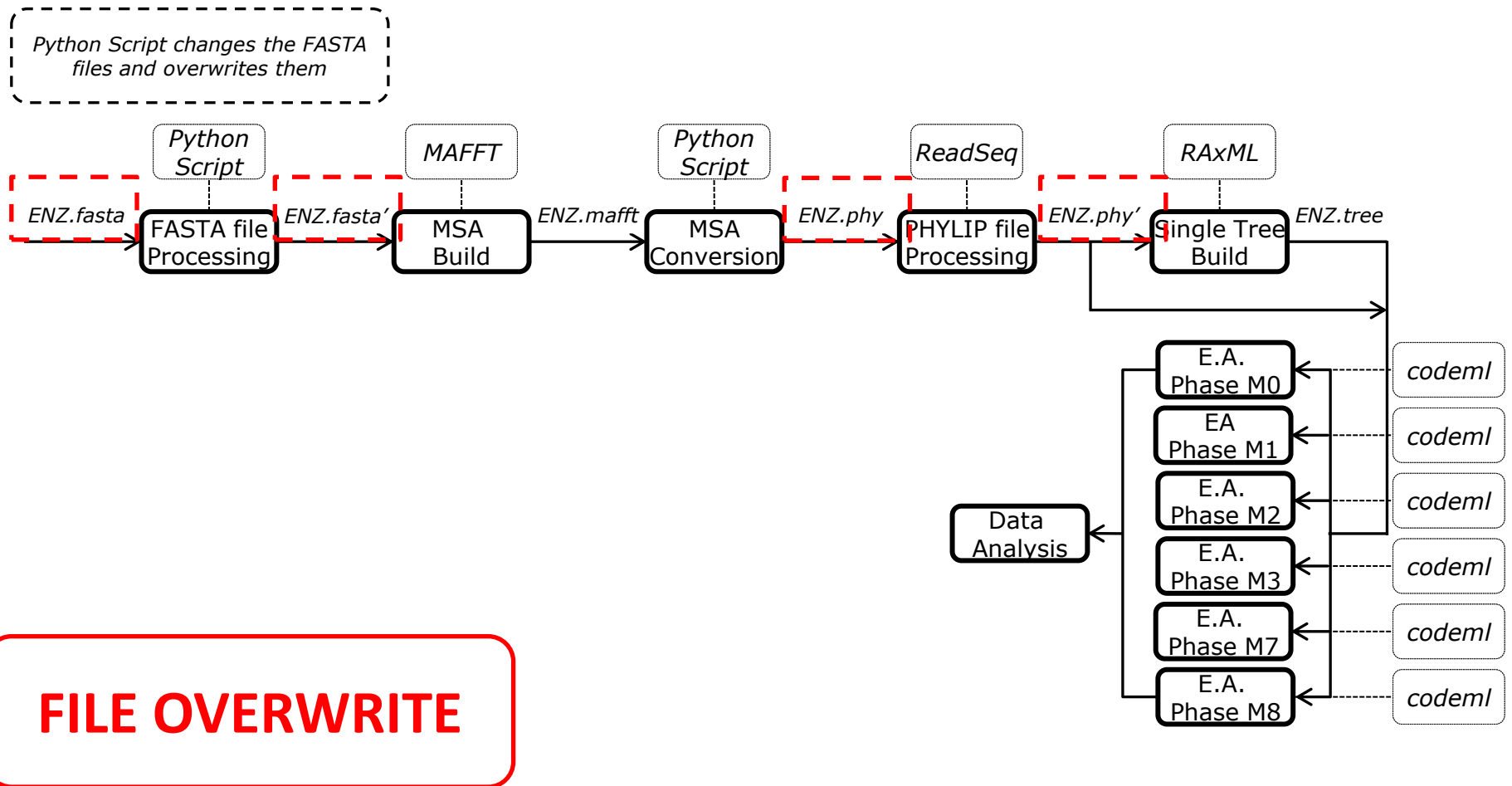
- Provenance gathering goals:
  - Identify the action responsible for data transformation during workflow execution.
  - **Gather data files transformations, even when not explicitly specified.**

## 2. Problem Statement



K. A. C. S. Ocaña, D. de Oliveira, F. Horta, J. Dias, E. Ogasawara, and M. Mattoso, Exploring Molecular Evolution Reconstruction Using a Parallel Cloud-based Scientific Workflow, *Advances in Bioinformatics and Computational Biology*, vol. 7409, Springer Berlin Heidelberg, 2012, p. 179-191.

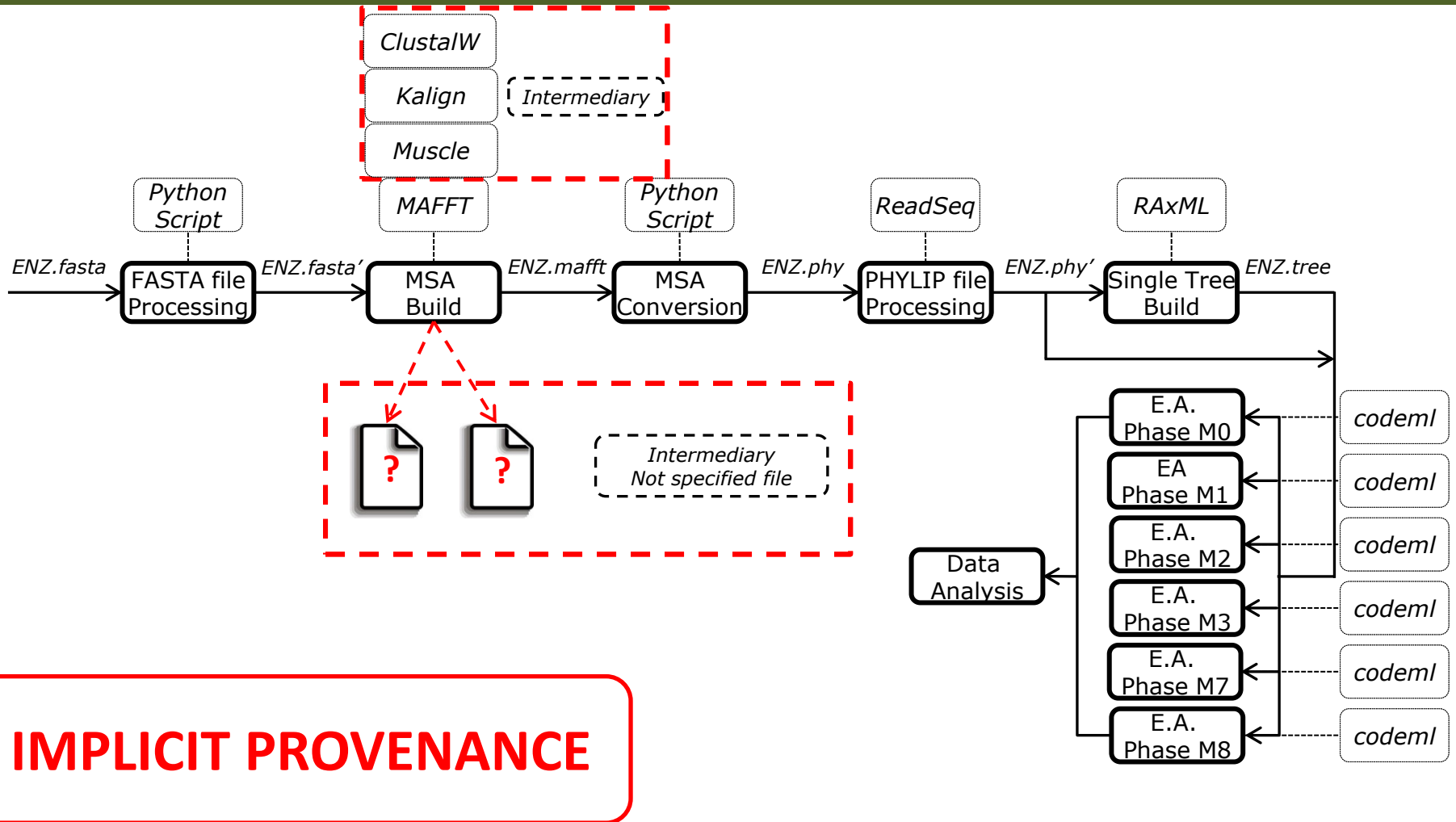
## 2. Problem Statement



K. A. C. S. Ocaña, D. de Oliveira, F. Horta, J. Dias, E. Ogasawara, and M. Mattoso, Exploring Molecular Evolution Reconstruction Using a Parallel Cloud-based Scientific Workflow, *Advances in Bioinformatics and Computational Biology*, vol. 7409, Springer Berlin Heidelberg, 2012, p. 179-191.

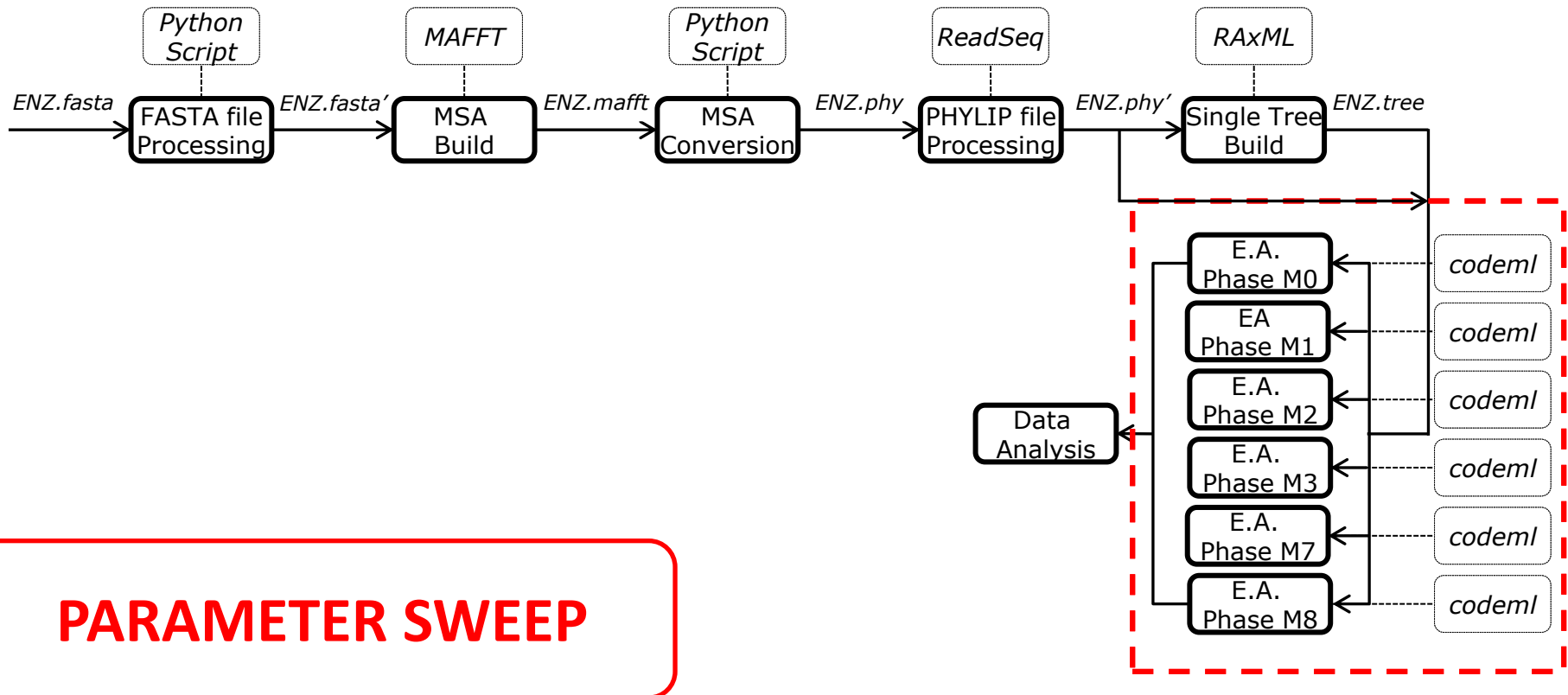


## 2. Problem Statement



K. A. C. S. Ocaña, D. de Oliveira, F. Horta, J. Dias, E. Ogasawara, and M. Mattoso, Exploring Molecular Evolution Reconstruction Using a Parallel Cloud-based Scientific Workflow, *Advances in Bioinformatics and Computational Biology*, vol. 7409, Springer Berlin Heidelberg, 2012, p. 179-191.

## 2. Problem Statement



**PARAMETER SWEEP**

K. A. C. S. Ocaña, D. de Oliveira, F. Horta, J. Dias, E. Ogasawara, and M. Mattoso, Exploring Molecular Evolution Reconstruction Using a Parallel Cloud-based Scientific Workflow, *Advances in Bioinformatics and Computational Biology*, vol. 7409, Springer Berlin Heidelberg, 2012, p. 179-191.

## 3. The ProvMonitor Approach

### ➤ Provenance and CM analogy

#### ☐ CM perspective

❖ What and Why: issue -> commit

→ workflow activity = issue to be tracked

→ experiment data = configuration item

#### ☐ Provenance perspective

❖ workflow activity -> provenance  $\approx$  issue -> commit

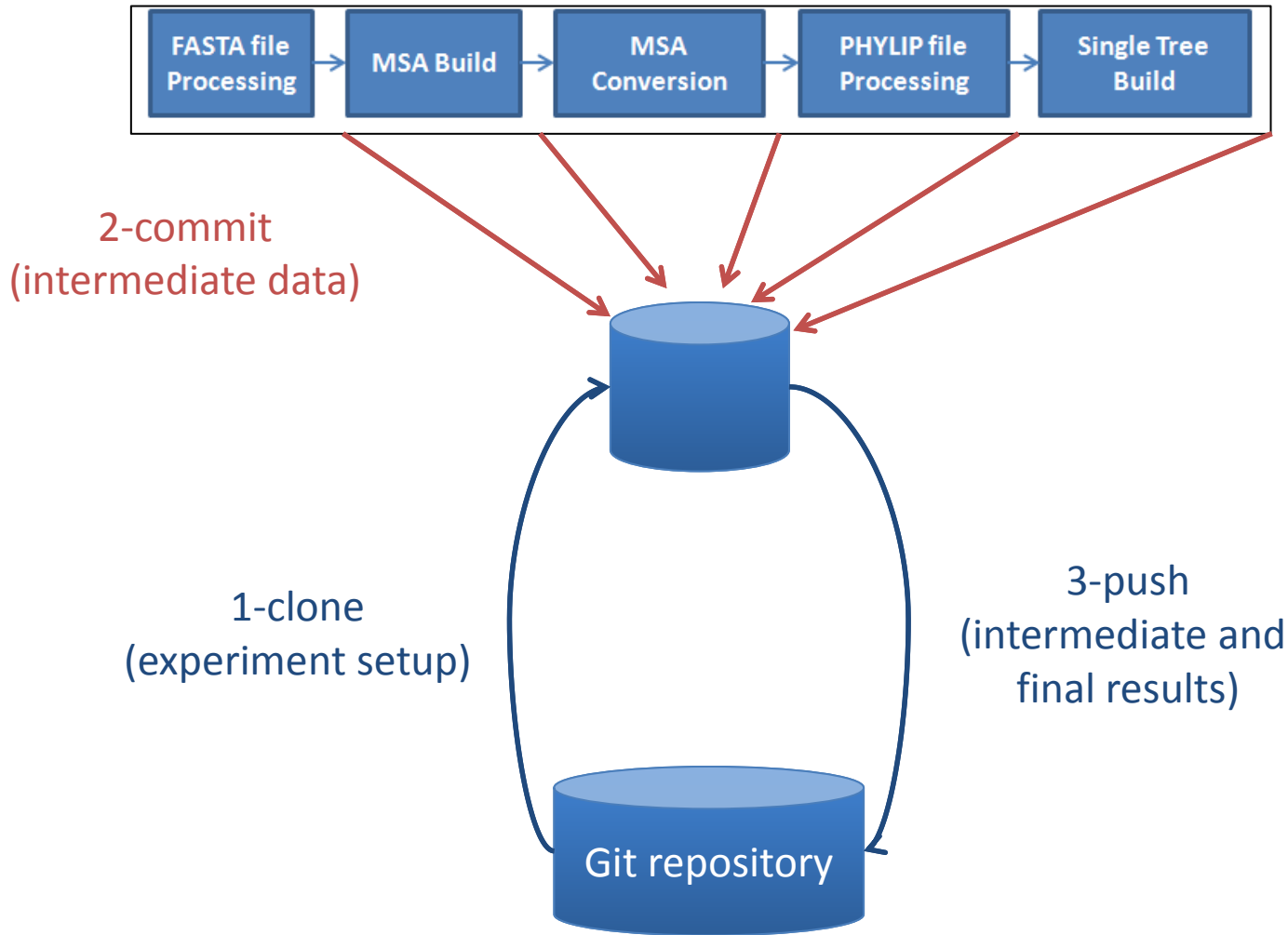
## 3. The ProvMonitor Approach

### ➤ **Our strategy:**

- Gather Provenance through a Configuration Management perspective.

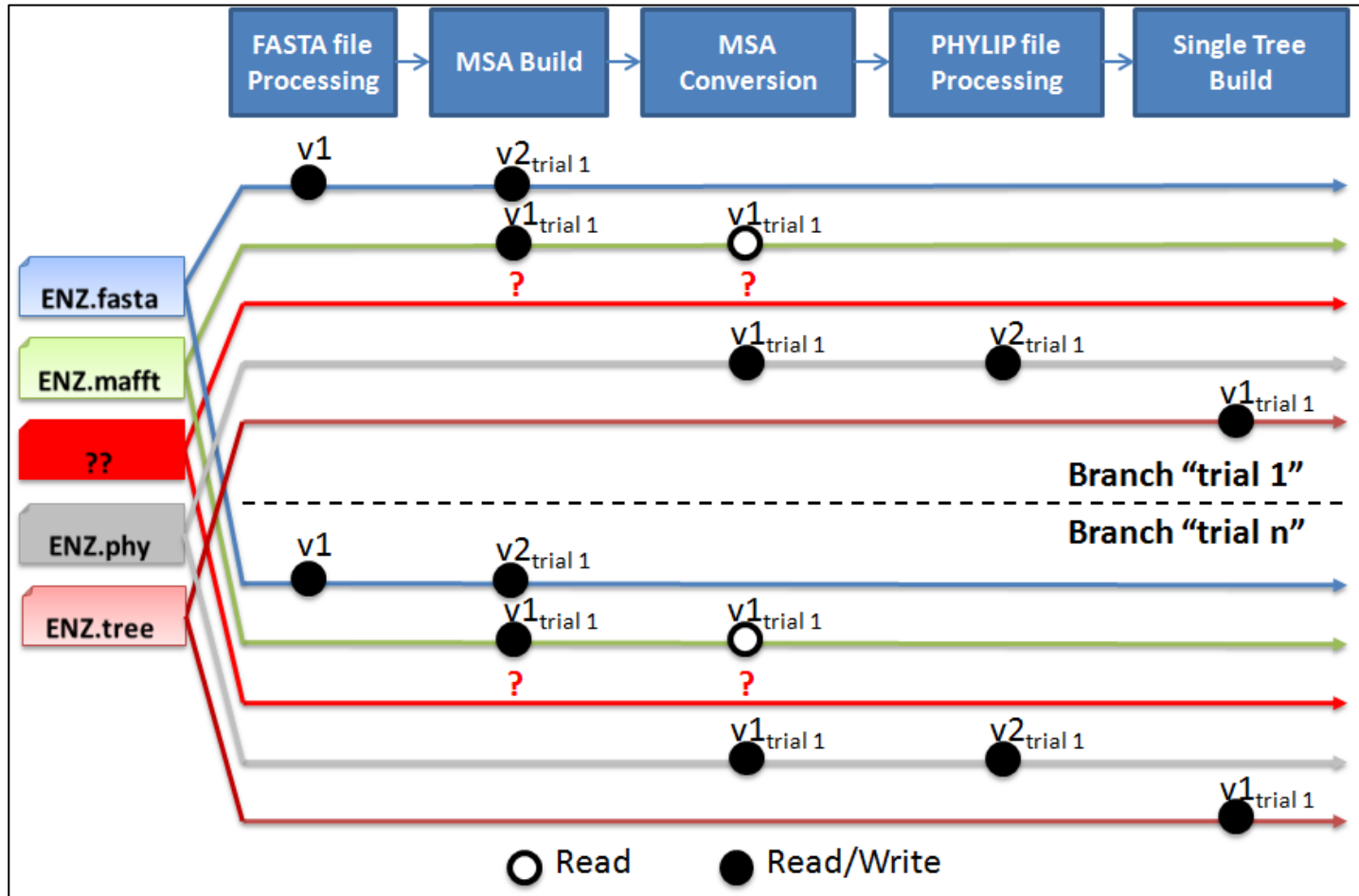
Provenance x CM	
Provenance problem	CM feature
File overwrite	Versioning
Implicit provenance	Workspace management
Parameter sweep	Branches

### 3. The ProvMonitor Approach



### 3. The ProvMonitor Approach

#### ➤ Approach gathering and analysis perspective



## 4. Conclusion

- Main contributions:
  - Implicit provenance definition;
  - Provenance perspective through Configuration Management;
  - Implicit provenance gather mechanism;

## 4. Conclusion

- Ongoing work:
  - Experiments;
  - New analysis opportunities:
    - Inter-trial;
    - Intra-trial;



# Implicit Provenance Gathering through Configuration Management

